



INFUSIO TREATMENT PROGRAMS

# LYME & TICK BORNE DISEASE



# GET BACK TO WHAT MATTERS

YOUR FIRST STEP TOWARD HEALTH BEGINS NOW













## TRAUMA AND HOPE

We understand that chronic degenerative disease is one of the most traumatic experiences a person can go through. It comes out of nowhere, and robs patients of their most valuable possession -- their health. At Infusio, we're dedicated to helping victims of Lyme disease make the conscious decision to reclaim their health.

Are you ready to stand up and say, "I choose to get healthy"? With that commitment from you, we're offering a path from hopelessness to empowerment. Introducing Infusio's Integrative Lyme Program -- a comprehensive treatment protocol for patients suffering from tick-borne disease. Offering the best of conventional and alternative medicine, and a deep understanding of the mind/body aspects of healing, Infusio empowers patients to reclaim their health and their lives.

This is a call to action. Make the choice to regain control of your health. We're here to stand with you, guide you, and give you the tools you need to take control.

# A NEW LOOK AT LYME

One of the first questions I am often asked is “Do you treat Lyme?” My answer to that is a simple “No!” The treatment for *Borrelia burgdorferi* exists; it’s called Doxycycline. Strangely, many Lyme patients don’t seem to feel better after a hearty course of Doxy.

The second question is, “So what do you treat then?” My answer: “I treat people who have been bitten by a tick and whose lives have been turned upside down.” For the sake of simplicity, I have called this program The Integrative Lyme & Tick Borne Disease Program, but if you have come to me to have your bugs zapped, you may want to look elsewhere. Everyone knows about *Borrelia*, but there’s more to Lyme than the bugs.

Due to the multiple complexities of Lyme, I find it important to approach successful treatment of tick-borne disease from a different angle. We won’t worry too much about what bugs are causing what symptoms, and we’ll focus instead on restoring foundational functions of our anatomy -- which is already designed to protect us from a microbial takeover.

Using the 5 Steps to Health, as well as the principles of cell therapy, I have designed a therapy approach that targets the foundational issues of tick borne disease. To learn more, read on.

## MEET INFUSIO FOUNDER PHILIP BATTIADÉ

Philip Battiade, the creator of the Infusio concept, has been practicing integrative medicine for over 20 years in Europe. The Infusio treatment concept reflects his empathetic approach to healing, incorporating the newest developments in cutting edge, traditional and natural treatments for chronic degenerative disease and emotional trauma.

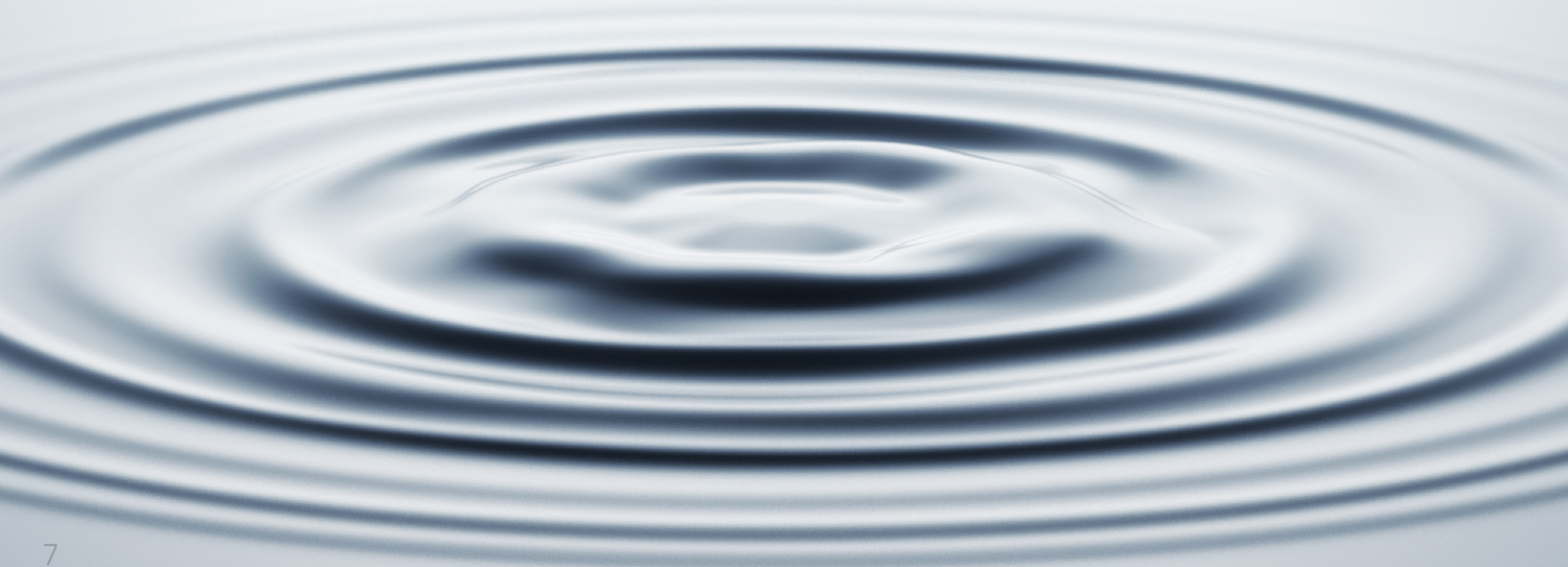




# FIVE STEPS TO HEALTH

## A MULTILEVEL APPROACH TO TREATMENT

To treat disease successfully, there is more involved than simply taking a drug to cure a symptom. Often, the complaints we have are the result of an accumulation of stresses to the body. These can be in the form of viruses and bacteria, but they can also be environmental and emotional. A multilevel treatment strategy may offer a more long-term solution. Infusio utilizes a 5-step integrative approach to achieving optimal health. We feel that these components form the core pillars of a successful therapy.





## IMMUNE MODULATION

A functioning immune system is the foundation of good health. Immune modulation involves balancing the ratio of the different immune cells, to help ensure that they work together effectively.

## CELLULAR OPTIMIZATION

Essential vitamins, minerals and other nutrients, delivered intravenously, restore the body's depleted supplies, revitalizing metabolism and immune health. Optimizing the cellular terrain also includes lowering the overall microbial load, repairing damage to organs, nerves and other cell structures, and reversing and preventing damage caused by genetic mutations.

## DETOXIFICATION

Environmental toxins, heavy metals and other harmful substances put stress on the body, impairing healing and proper functioning. Detoxification treatments help relieve the toxin burden, so the body can perform at its highest level.

## DISEASE-SPECIFIC TREATMENT

Infusio incorporates the best of both traditional and alternative therapies. This approach is key to supporting the body's inner balance, enabling it to effectively attack disease and lower overall microbial load.

## MIND-BODY MEDICINE

The right mindset is critical. Overcoming stress, anxiety and the "fight or flight" response is essential to healing. Infusio uses proven methods, including stress management, lifestyle coaching, and physical therapies, to empower the patient and stimulate the natural healing powers of the body.



## UNDERSTANDING TICK-BORNE ILLNESS

### WHAT IS LYME DISEASE?

Lyme Disease is a multi-faceted, systemic disease requiring a multi-level integrative approach. Infusio takes a new look at Lyme, and has designed a program that takes into account multiple aspects of Lyme disease and addresses them on multiple levels, from foundational optimization to neurological and structural repair. Not just zapping bugs, but supporting the whole patient -- empowering them to say "Yes!" to achieving optimal health.



## THE TICK'S BITE

It is impossible to tell exactly which viruses, bacteria, parasites and other microbes are causing a Lyme patient's symptoms. Consider that when a tick bites someone, it does not only carry the famous 5: *Borrelia*, *Ehrlichia*, *Babesia*, *Bartonella* and *Mycoplasmas*, all bugs we readily test for. That tick may also have a whole array of microorganisms in its charge - hundreds of bacteria, viruses, fungi, and scores of parasites.

The bite of an individual tick is like a fingerprint. It is unique in itself and it passes on its own unique set of microbes. This could be one of the reasons for the very individual manifestation of Lyme disease in patients, and the regional similarity in symptoms. In fact, the term "Lyme Disease" may be inadequate to the task of describing the constellation of symptoms associated with tick bites. Therefore, "tick-borne illness" is a more accurate description.

## A PERFECT STORM

When a tick bite, a compromised immune system, and an unhealthy cellular terrain come together, whatever the tick injects into your system can move in and make itself right at home. In time, the microbial load can overwhelm the immune system.

The CDC provides us with a good range of symptoms that the *Borrelia* bug can cause. But why do some people experience brain fog and others digestive issues, while still others complain of joint or muscle pain, or terrible food intolerances?

Tick-borne illness can act like a magnifying glass, amplifying things that are already wrong, and exaggerating the body's weaknesses.

INFUSIO TREATMENT PROGRAMS  
LYME & TICK BORNE  
DISEASE





## PHASE ONE 13

### INITIAL TREATMENT

10 days of treatment at an Infusio Treatment Center, including medical consultations, oxygen and IV therapies, bodywork, nutritional counseling, autologous cyto-immunotherapy, and SVF cell therapy.

## PHASE TWO 19

### HOME PROGRAM

Infusio's four-month home program. Patients are provided with a customized diet plan and supplement regimen, along with weekly follow-up calls and an educational video course.

## PHASE THREE 23

### IN-OFFICE FOLLOW UP

A three-day in-office follow-up, including a consult with an Infusio doctor, supportive IV therapy, autologous cyto-immune therapy, and optional genetic and hormonal recommendations.

## PHASE FOUR 27

### OPTIMIZED HOME CARE & AFTERCARE

Eight months of optimized home care and aftercare, designed to address the patient's individual healing process.

# PHASE ONE

## INITIAL TREATMENT - 10 DAYS

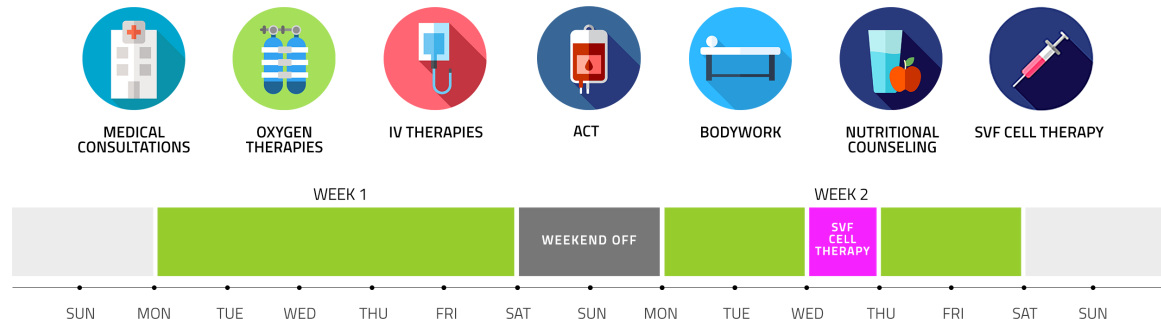


### OVERVIEW

The Integrative Lyme Program is a 12-month program beginning with a stay at one of our Infusio treatment centers. Days in the Infusio Center are spread over a 2-week period, with the weekends off. As the treatment protocol is very intense, weekend rest days during the therapy are an integral part of the planning.

The treatment includes 10 days of supportive therapies such as medical consultations, IVs, immune modulation, bodywork, nutritional counseling, lymphatic drainage, and photobiomodulation. Typically, after 8 days of supportive treatments, you will be scheduled for a procedure day to receive cell therapy.

### TIMELINE





# TREATMENTS & DIAGNOSTICS

## AUTOLOGOUS CYTO-IMMUNOTHERAPY

ACT is an immune therapy utilizing an extract made from a person's own blood. It has been developed to take information found in the patient's immune system and potentiate its activity.

## PHOTOBIOMODULATION

The application of low-level laser and infrared frequencies, to stimulate mobilization of the body's stem cells. This treatment may influence the way the cells function, releasing a cascade of so-called transcription factors and reducing oxidative stress.

## THYMUS THERAPY

Thymus therapy is thought to support and restore healthy thymus function, thus improving and balancing the immune system.

## LYMPHATIC DRAINAGE

Lymphatic drainage helps reduce cellulitis, swelling and water retention, and is also used to assist in detoxification. Lymphatic drainage is performed before and after your procedure.

## BODYWORK

Massage therapy, craniosacral therapy and osteopathic techniques are used for relaxation and to promote healing processes.

## GLOBAL DIAGNOSTICS

Global Diagnostics is an alternative, whole-body scanning and treatment system from Germany, based on bioenergetics.

## HYPERBARIC OXYGEN THERAPY

When tissue is injured, it may require more oxygen to heal. Hyperbaric oxygen therapy increases the amount of oxygen dissolved in your blood. An increase in blood oxygen may improve oxygen delivery for vital tissue function to help fight infection or minimize injury.

## NUTRITIONAL CONSULT

Healing your gut is a crucial step in your recovery. During a personal consult, your eating habits and food choices will be discussed and a customized diet plan will be issued.

## EMOTIONAL DETOX

During the 10-day treatment, most patients do very well, but it is not unusual to feel mild to severe fatigue for the first few days. The IV regimen is quite intensive and lasts approximately 4 hours each day. Some patients are understandably concerned about negative reactions to the IVs themselves, but these are very rare and seldom serious.

The second week often involves an "emotional detox", when emotional issues and stress seem to be more prominent for some patients. Our team is here to provide emotional support, and help guide you through any challenges you may face on your path to healing.



# IV THERAPIES

## OUR PROTOCOL

Our IV treatment protocol has been carefully developed to work synergistically – not as individual components, but as a harmonious whole. The exact mechanisms used can be complex, but we understand that you shouldn't need a medical degree to understand what you're putting in your body. Our Infusio team is committed to transparency about our process, and we're happy to answer any questions you may have.

## ANTIMICROBIAL IVS

Lyme can involve many more harmful microbes than the familiar *Borrelia*. IV treatments including Artesunate, which is known to have antimicrobial and anticancer properties, and Dioxychlor, a natural antimicrobial that supplies oxygen to cells, work to eliminate hostile invaders and give the body a chance to repair itself.

## ATP ACTIVATION IVS

ATP, or adenosine triphosphate, is an essential molecule that acts as an energy source for our cells. Its activation is key to many vital processes in the body, including cell-to-cell signaling, supplying the energy needed for muscles and nerves to work properly, and healthy nervous system function.

## DETOX IVS

A body suffering from chronic disease may need extra help eliminating harmful environmental toxins and metabolic waste. Detoxifying IV treatments include glutathione, which deactivates destructive free radicals and helps recycle vital energy-producing enzymes, and phosphatidyl choline, which supports liver function.

## ORTHOMOLECULAR IVS

High doses of vitamins, minerals and other beneficial nutrients feed and restore cells and cellular structures. Myer's cocktail is designed to improve metabolic health, and an individualized nutrient blend is specially compounded to help regulate cell and immune function.

## CELL PREPARATION IVS

IV treatments bypass the digestive system, increasing the bioavailability of essential nutrients. But in order for nutrients to be absorbed properly, the cells must be prepared, to increase permeability of the cell walls and open the gates for beneficial effects to occur.

## PH REGULATION IVS

When the delicate balance of acids and bases in the body's fluids isn't properly maintained, inflammation occurs and immune response suffers. Restoring optimal pH ensures correct functioning of all the body's systems.

## NEUROAMINO IVS

Impaired neurological function is a frequent symptom of chronic disease, causing chronic fatigue and other troubling issues. Specific amino acids are precursors to vital neurotransmitters, necessary for improved cell-to-cell signaling, and NADH, a vitamin with brain-restorative properties, is also known to assist in energy production.

## 10 PASS OZONE THERAPY

Ozone is a powerful, safe "super-oxygen" that kills harmful microorganisms, improves metabolism, helps the body fight infections and cancers, and stimulates the immune system. Intravenous ozone therapy has been shown to help with Lyme and a variety of other medical conditions.



A medical professional, likely a scientist or lab technician, is shown in profile, wearing a blue surgical cap, a blue face mask, and green scrubs. They are wearing white gloves and using a white pipette to transfer liquid into a clear microcentrifuge tube. The background is a bright, clean laboratory environment.

# SVF CELL THERAPY

## WHAT IS SVF?

SVF stands for stromal vascular fraction -- a powerful extract made from the patient's own fat. It contains potent, versatile adipose-derived stem cells, along with an array of other beneficial cells and supportive growth factors. When administered, SVF triggers a systemic healing response that activates the body's own capacity to rebuild itself.

## THE PROCESS

Cell therapy day is the most important day of your treatment. The procedure is usually performed around the middle of the second week of supportive therapies, but some flexibility is possible, to ensure that the therapy is administered at the best possible time.

Patients often ask what they can expect to experience during and after cell therapy. This is not necessarily a simple question, as everyone can react differently.

The initial mini-liposuction required for the cell harvest is relatively painless. It is performed under local anesthetic only. The procedure itself is minimal, and we maintain a clean, sterile environment, which is necessary to prevent infection and ensure the cells remain undamaged. Since you will remain awake for the procedure, you're welcome to listen to music or chat with the doctor.

Once the fat has been extracted, it is immediately processed into SVF. This process takes about 90 minutes. The application of the cell therapy is very simple and practically painless. The stem cells are simply administered through an IV into the blood, where they can spread throughout the body. They can also be applied to a specific area. We use the newest developments in laser technologies to boost cell multiplication.

In some cases, we choose to infuse a sugar called mannitol before the SVF application. Mannitol is used to open the blood-brain barrier, enabling important factors contained in the SVF to enter the central nervous system. After application of the cells, you will be monitored for a few hours. As we are utilizing stem cells from your own body, there is no risk of an allergic reaction or of the body rejecting the cells.

Now, the real magic can begin.

# PHASE TWO

## HOME PROGRAM - 4 MONTHS

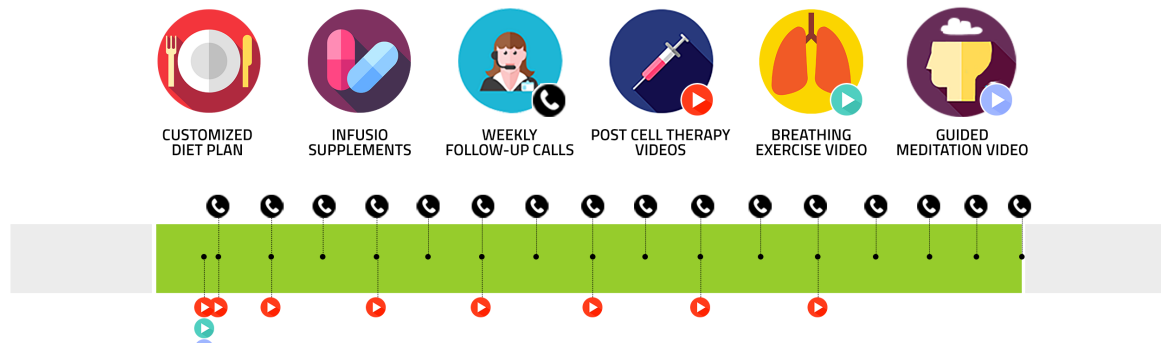


### OVERVIEW

Infusio's Home Program lasts 4 months following your initial stay. The Home Program features weekly followup calls, a customized diet plan, a supplement regimen using Infusio's house-made natural supplements, and an educational video program.

The Home Program is, in many ways, the most important part of your Infusio treatment. Your body will experience many changes, and sometimes challenges. Your Infusio team is here to support you at every step.

### TIMELINE





# SUPPORTIVE THERAPIES

## WEEKLY FOLLOW-UP CALLS

You're not alone in your recovery. Our weekly follow-up calls give you a chance to discuss your progress in depth with an expert member of the Infusio team.

## INFUSIO SUPPLEMENTS

Infusio's regimen of supplements is designed to work as a whole, and it's an integral component of our program. It supports the different processes triggered by the initial treatment regimen, as well as by the application of SVF and ACT.

## CUSTOMIZED DIET PLAN

Proper nutrition is essential to health and healing. Your Infusio team will provide you with an individualized diet plan, to help feed your body the right way and ease any symptoms you may be experiencing.

## OUR SUPPLEMENTS

- CBS Support
- SAmE - Methylation Support
- Histamine Scavenger
- DAO Enzyme
- Zeolite Clay
- Psyllium Seeds
- Bacterial Reprogramming
- AMPK Activator
- KPU Support
- Oregano Tea
- Castor Oil
- Golden Milk Powder



# EDUCATIONAL VIDEO PROGRAM

## EDUCATIONAL VIDEOS: WHAT YOU'LL LEARN

The mind plays a critical role in healing and recovery. Good mental and physical habits lead to better outcomes, and mastering the mind-body connection is a key component of Infusio's unique integrative approach.

To this end, our educational video course is a vital part of your recovery toolkit. Take control of your healing by learning the skills you'll need to create the best conditions for achieving optimal health. Infusio is committed to providing you with all the information you need to understand the healing process, and form new habits that will empower you for life.



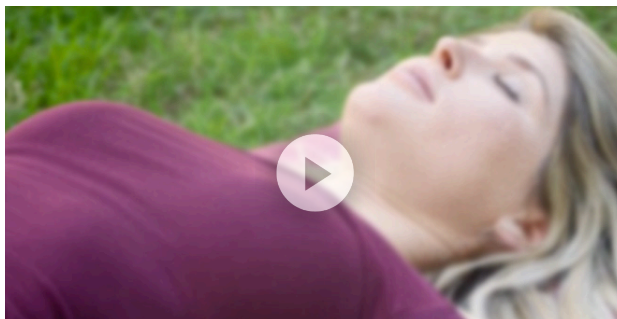
## POST CELL THERAPY

Infusio's Health Coach guides you through the recovery phase of the cell therapy process. You'll learn what to expect at every stage, along with lifestyle tips, exercises, tasks, affirmations, and even recipes.



## BREATHING EXERCISE

Deep, mindful breathing releases tension and promotes overall wellbeing. Infusio's Health Coach teaches you how to perform a breathing exercise routine that you'll be able to implement in your daily life, to relieve stress and anxiety and improve oxygen supply.



## GUIDED MEDITATION

Meditation is known worldwide as a powerful tool to relieve stress and anxiety. However, learning how to do it properly can be challenging. Infusio's Health Coach provides you with exercises and techniques to support you through the recovery phase.



# PHASE THREE

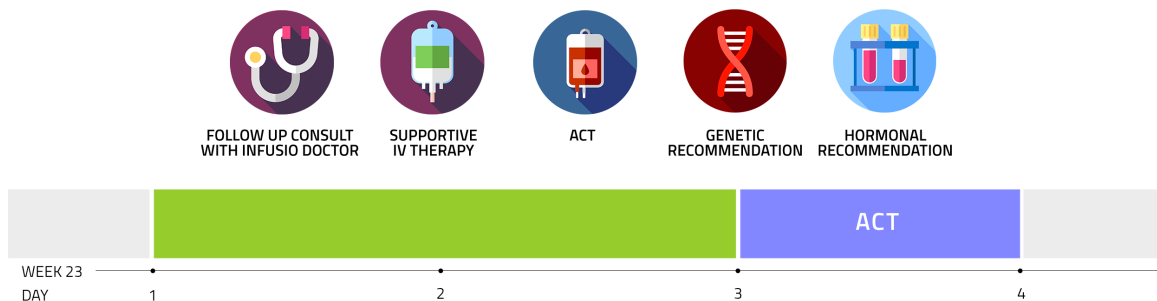
## IN-OFFICE FOLLOW-UP - 3 DAYS



### OVERVIEW

At approximately the 3-month mark, you will return to your Infusio treatment center for a 3-day in-office follow-up. This will involve a consultation with an Infusio doctor, supportive IV therapies, and ACT – autologous cyto-immunotherapy, a treatment designed to support immune function and further healing.

### TIMELINE



# AUTOLOGOUS CYTO-IMMUNOTHERAPY

## WHAT IS ACT?

ACT stands for autologous cyto-immunotherapy. It has been developed to take information found in a patient's own immune system and potentiate its activity. As the body responds to an infection, the immune system develops markers specific to the microbes it is being exposed to. By extracting the cells involved in this process and presenting them back to the immune system, this extract can be used to give selective and individualized responses back to the immune system.

## HOW IS ACT PERFORMED?

For the patient, ACT is as simple as a blood draw followed by an IV infusion given hours later. In the lab, the blood is spun down and separated and a specific selection of cells is extracted. The ACT is re-administered as an IV infusion lasting a few minutes.

## IS ACT SAFE?

ACT is an immune therapy utilizing an extract made from a person's own blood. The components found in ACT have been safely used in the fields of auto-immune disorders, immunology, infectious disease, blood diseases and cancer. Many successful studies have been conducted on the use of individual cell lines as well as combination therapies. As the extract is taken from a patient's own tissue, there is no danger of rejection or allergic reaction.

## A CRITICAL STEP

Our blood carries a whole host of immune cells and immune-specific markers. Their interaction plays a fundamental role in enabling the body to launch a coordinated immune response against disease. In many patients with a chronic illness, the immune system is compromised and its response inadequate.

A critical step in overcoming chronic disease is restoring the immune system and helping immune cells identify and destroy invading microbes.

# PHASE FOUR

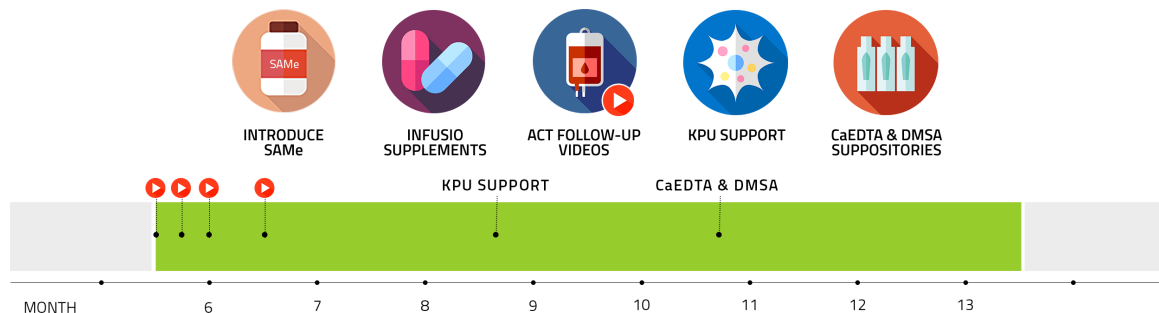
## OPTIMIZED HOME CARE AND AFTERCARE - 8 MONTHS



### OVERVIEW

The Home Program continues – carefully adjusted to meet your specific needs. After your follow-up consult, you'll return home for 8 months of recovery time, optimized home care and aftercare, individually fine-tuned by our Infusio team. We'll provide you with guidelines to ensure that your recovery is smooth, and detailed recommendations based on your progress.

### TIMELINE





# SUPPORTIVE THERAPIES

## INTRODUCE SAME

Started at 4 months post-cell therapy, SAME – S-Adenosyl-L-Methionine – is a naturally-occurring substance that supports neurological healing and proper liver function. It can interact with some medications, so your Infusio team will let you know what dosage is right for you.

## KPU SUPPORT

Lyme can hijack certain cell processes, preventing the body from retaining zinc, B6, and other essential factors – a condition called Kryptopyrroluria, which can also cause cells to “hoard” heavy metals in place of the missing zinc. Started at around 7 months post-cell therapy, the KPU protocol enables the release of these harmful substances.

## CaEDTA & DMSA SUPPOSITORIES

Used in the evening, these assist in “mopping up” the metals displaced by the KPU support protocol.

## INFUSIO SUPPLEMENTS

Your customized supplement regimen continues, tailored to your specific needs and concerns with the help of our experts. Various supplements work to support cell function, regulate detoxification, and assist with emotional health and restorative sleep. They are specifically designed to enhance our IV supportive therapies, and to serve as a home treatment during the post-cell therapy period.

## ACT FOLLOW-UP VIDEOS

There’s a lot going on in your body post-ACT. In these video tutorials, an Infusio Health Coach will tell you what to expect, and teach you useful techniques you can use to speed your recovery.

## ALL IN ONE

Our practitioners may suggest adding additional treatments to your protocol. Available add-on treatments include genetic recommendations, hormonal recommendations, and other services that may be appropriate for you. These treatments will incur an additional charge. Your practitioner will explain, in detail, why such a recommendation is being made.

## INFUSIO ISN'T FOR EVERYONE

Now that you've learned what you can expect from Infusio's Integrative Lyme Program, you should know that Infusio isn't for everyone. Lyme is a complex condition that affects different people in different ways. Some patients will require individual, specific procedures and services, lab diagnoses, or elimination of bugs. Infusio probably isn't the best choice for them.

But if you're ready to move forward with a new and exciting integrative approach, restoring your body's natural processes on a foundational level... if you're ready to let go of stress, anxiety, and anger, and say "Yes!" to reclaiming your life from Lyme... if you're ready to work alongside a caring and experienced team that's committed to pursuing the best outcome for you and your health... we look forward to meeting you! Your journey to optimal health begins now.





INFUSIO

[www.infusio.org](http://www.infusio.org)

+1 (888) 605 6579

[info@infusio.org](mailto:info@infusio.org)

The mentioned treatment modalities are exclusively available to Infusio Elite Members. Infusio Elite is a Private Membership Association and the information contained on this website/brochure/leaflet is for the use of our Private Members Only. Please contact us for information regarding membership to Infusio Elite Private Association.